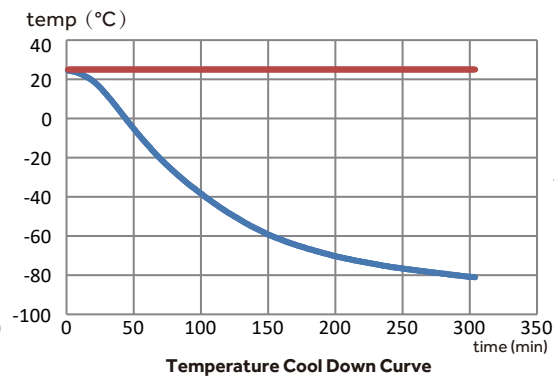
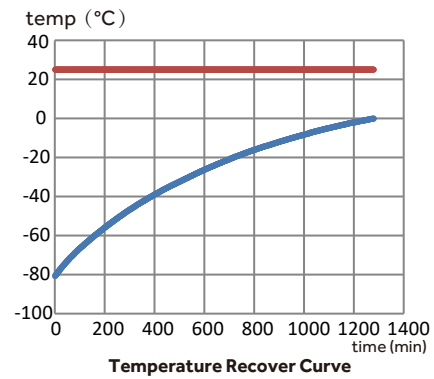


# ULT Freezer DW-86L729

## Typical Performance Characteristics in 25°C Ambient



— center of 3<sup>rd</sup> shelf — amb temp



Parameter	W0	W1	W2	W3	H0	H1	D0	D1	D2
Model	1049	946	766	750	1980	1310	980	716	710

**KEY**  
 W0 --- TOTAL WIDTH  
 W1 --- FREEZER WIDTH  
 W2 --- INNER CABINET WIDTH  
 W3 --- SHELF WIDTH  
 D0 --- TOTAL DEPTH  
 D1 --- INNER CABINET DEPTH  
 D2 --- SHELF DEPTH  
 H0 --- TOTAL HEIGHT  
 H1 --- INNER CABINET HEIGHT

## Specifications

### DW-86L729

Technical Data	Cabinet Type	Upright		High/Low Temperature	Y
	Climate Class	N		Hot Condenser	Y
	Cooling Type	Direct cooling		Power Failure	Y
	Defrost Mode	Manual		High/Low Voltage	Y
	Refrigerant	HC		Sensor Error	Y
Performance	Sound Level (dB (A))	52		Low Battery	Y
	Cooling Performance (°C)	-86		High Ambient Temperature	Y
	Temperature Range (°C)	-40 ~ -86		Door Ajar	Y
Control	Controller	Microprocessor		Caster	Y
	Display	LCD		Foot	Y
Electrical Data	Power Supply (V/Hz)	220 ~ 240/50		Porthole	Y/2
	Power (W)	1700		Shelves/ Inner Doors	3/4
	Electrical Current (A)	9		USB Interface	Y
Dimensions	Capacity (L/Cu.Ft)	729/25.75		Remote Alarm	Y
	Net/Gross Weight (approx)	kg	350/385	5V Power Supply Port	Y
		lbs	771.6/848.8	Temperature Chart Recorder	Optional
	Interior Dimension (W*D*H)	mm	766*716*1310	RS485 Port	Standard
		in	30.2*28.2*51.6	CO2 Backup System	Optional
	Exterior Dimension (W*D*H)	mm	1049*980*1980	LN2 Backup System	Optional
		in	41.3*38.6*78.0	Other	Certification
Packing Dimension (W*D*H)	mm	1100*1105*2150		CE	
Container Load (20'/40'/40'H)	in	43.3*43.5*84.6			
		10/20/20			

# ULT Freezer

## DW-86L729

### Making Your Lab More Intelligent and Reliable

#### Intelligent Inventory Management

10-inch touchscreen with single version inventory management allows users to easily record item locations, entry and exit records for intelligent stock management.

#### Safe and Reliable Storage

Temperature uniformity  $\leq \pm 5^\circ\text{C}$ , equipped with an intelligent temperature monitoring system, real-time temperature data monitoring function and multiple safety alarm system.

#### Energy Saving and Environmentally Friendly

The optimized hydrocarbon refrigeration system is more environmentally friendly and uses significantly less energy than older technologies, saving up to 30% on electricity. ENERGY STAR certified.



## Ergonomic Design



### Narrow Door Design

The freezer can pass through a 880mm wide door when the freezer door is open.



### New Handle Design

Adopting exclusive slide design, easy to open and close the door



### Pressure Equalization Port

Equipped with pressure equalization port for easy opening



### Porthole

Two portholes as standard, allows for independent testing of cabinet temperature



### Filter Design

Tool-free removable filter, making it easy and quick to clean the filter



### Detachable Inner Door Design

Tool-free detachable inner door, ensuring easy and quick defrost



## Product Advantages



### Large Intelligent LCD Screen Visual Management

10-inch high-performance LCD capacitive screen, sensitive touch operation; intuitive display of inside temperature, ambient temperature, input voltage and other data and temperature curves.

### Stored Items(materials) Management System

An accurate stored items management system was developed for users who don't use freezer racks, boxes and vials, the system easily records the items locations, entry and exit records and largely facilitate item inventory and statistics.



Single version (standard)



Professional version (optional)

The stored item management system was developed for users who use freezer racks, boxes and vials, the system can easily record the item locations, entry and exit records, facilitate item inventory and statistics with multi-screen interaction and reduce errors through secondary verification.

### Equipped with Multiple Interfaces

- Standard USB interface, capable of storing data for 10 years
- Standard remote alarm terminal and RS485 port



### Multiple Options for Safe Management and Control Systems

Password lock as standard with optional fingerprint module, face recognition and punch card system. Multi-person management control option to ensure safe and secure storage.

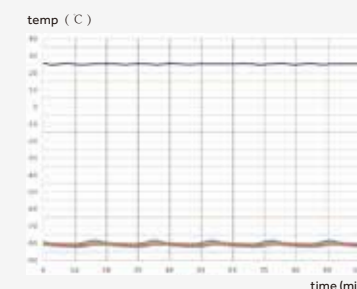
### Optional IoT System Real-time Monitoring

The IoT APP can monitor the operating status of the equipment anytime and anywhere. The unit is equipped with self-diagnose system faults and alarm functions, ensuring sample safety.



### Safe and Secure with Multiple Alarms

Designed and manufactured with multiple alarm functions, such as high temperature alarm, low temperature alarm, sensor failure alarm, power failure alarm, low battery alarm, door ajar alarm and high ambient temperature alarm to name a few.



### Precise Temperature Control ensures Safe Storage

The setting temperature is adjustable between -40 ~ -86°C, monitoring temperature curves in real time, and the temperature safety alarm system is the latest design and state-of-the-art technology.



# WolfLabs

**Pricing on any accessories shown can be found by keying the part number into the search box on our website.**

The specifications listed in this brochure are subject to change by the manufacturer and therefore cannot be guaranteed to be correct. If there are aspects of the specification that must be guaranteed, please provide these to our sales team so that details can be confirmed.

**[www.wolflabs.co.uk](http://www.wolflabs.co.uk)**

**Tel : 01759 301142**

**Fax : 01759 301143**

**[sales@wolflabs.co.uk](mailto:sales@wolflabs.co.uk)**

Please contact us if this literature doesn't answer all your questions.